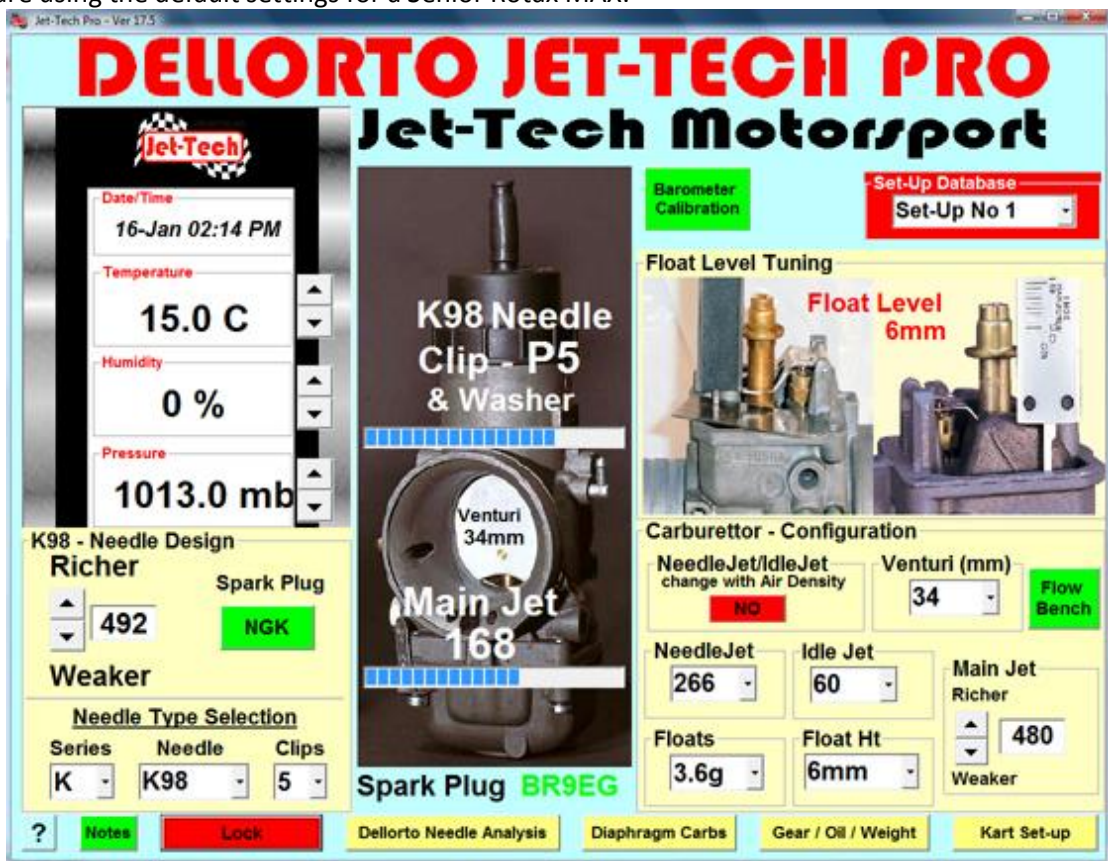


1.

1. This is the starting point when fine-tuning the software to match your own engine/carburettor combination. In this example, we are using the default settings for a Senior Rotax MAX.



2.

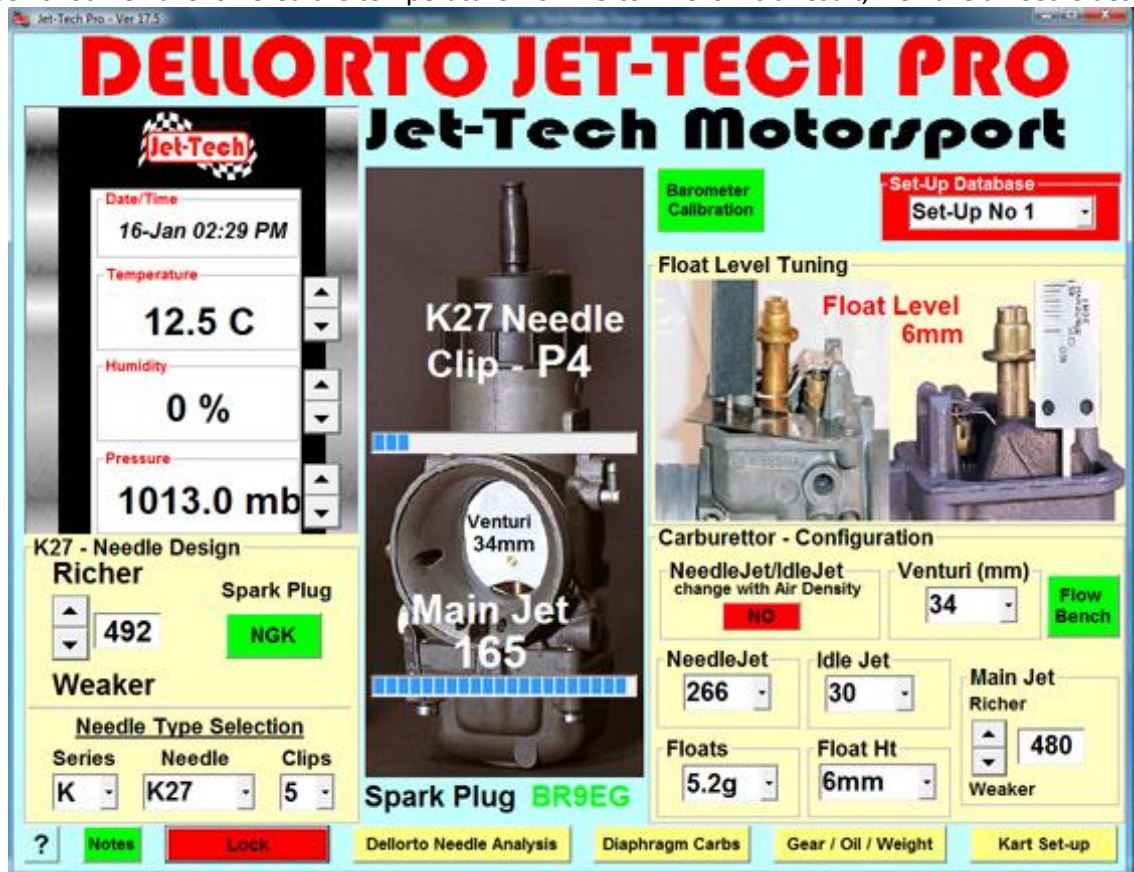
2. In this screen shot, we have simply changed the carburettor configuration to the K98 needle, 3.6g floats and 60 idle jet combination. Note that we have not changed any other parameter. You can see from this that this combination

requires a richer main jet and the needle is now on clip 5 ie. The needle needs to be higher which lifts it further out of the main jet. This is because the K98 needle has a 'fatter' profile so the taper of the needle blocks off more of the main jet hole, restricting the flow of fuel.



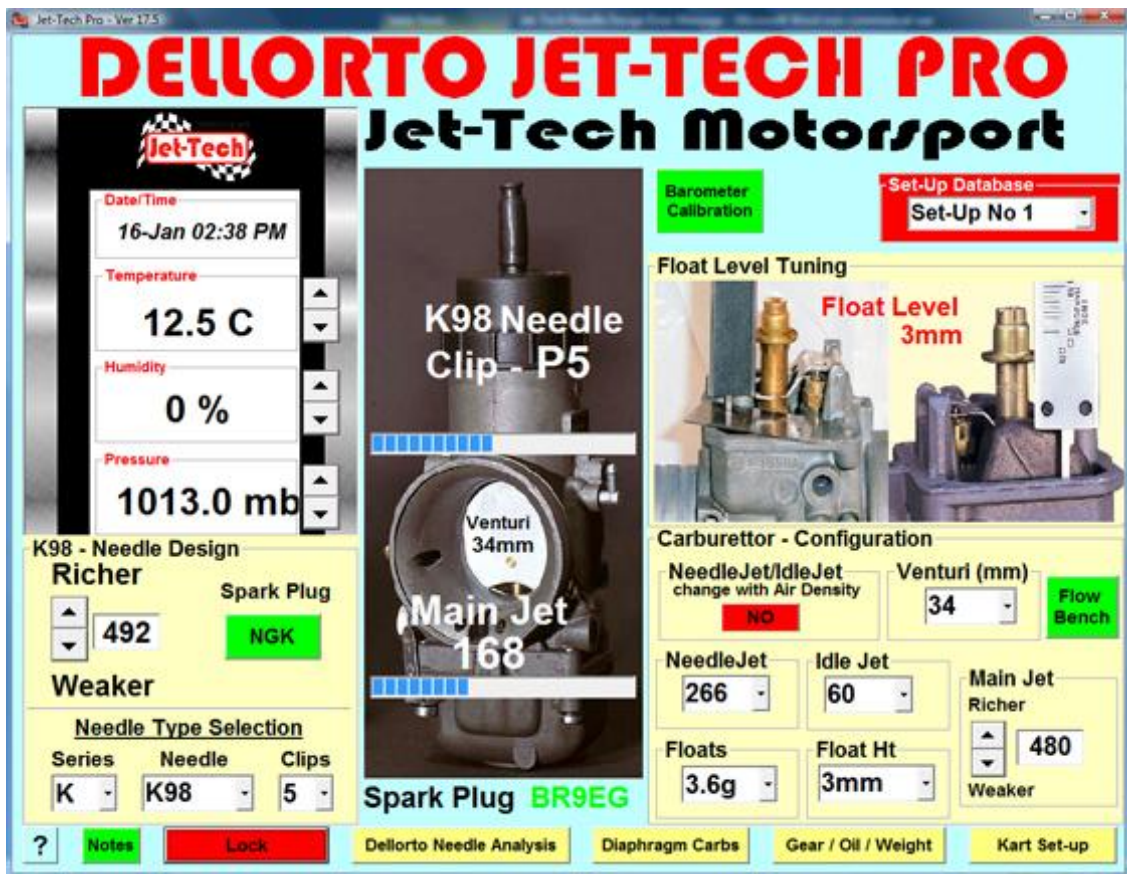
3.

3. In this screen shot we have lowered the temperature from 15 to 12.5°C. As a result, we have a needle design error.



4.

4. If we change the needle to a K27 the floats to 5.2g and 30/30 idle jet, for the same weather conditions, we can resolve the problem of the K98 needle design limits. It is important to note that it is not just the needle that we have changed to resolve the problem but the combination of settings.



5.

5. Returning to the K98 needle, 3.6g floats and 60 idle combination: In this example, again for the same weather conditions (12.5°C) we have made the jetting richer overall by adjusting the float height from 6mm to 3mm. This allows the floats to sit higher in the float bowl and as a result, more fuel is in the bowl thus increasing the static head.

In the previous example (4.), one of the changes we made was to heavier floats (5.2g). This would have a similar affect at the original float height of 6mm, because the floats sit lower in the bowl therefore raising the fuel level.

So, if you get a needle design error, there are a number of things you can do depending on whether the needle installed cannot be set weak enough or rich enough. In this example, the needle had to be raised beyond its limits (to make the jetting richer) so we need to find a float height to make the jetting richer overall or change the carburettor configuration.

If the needle design error stated that a setting was required that was weaker than the limits of the needle, the converse would apply ie. We could lower the floats in the float bowl (from 6mm to 8mm for example) or change to another needle, float weight, idle jet combination etc.

It is important to understand that these are examples based on the factory default settings and your own setup may show different settings. In these examples, the Needle Design Factor (492) and Main Jet Factor (480) are default factors for a Senior MAX. When you go through the fine-tuning process, it is these factors that you will have adjusted until you have matched the software correctly to your own engine/carburettor. Remember that every engine/carburettor is different – even the Rotax MAX – which is why we enable you to tune the software to your own!

If you need any help in setting up the software, there are 'Help' pages available for each Jet-Tech screen. Simply open the Jet-Tech screen that you want help with and click on the '?' in the corner or press 'F1' on your computer keyboard to open the 'Help' page.

We also recommend viewing the video tutorials available for each product at:

http://www.rotaxjetting.com/Video_Tutorials.htm

For technical support, please go to <http://www.rotaxjetting.com> and firstly view the FAQ's. If you do not find an answer, please use the Support Request form on the 'Support' page.